

Planning and Transport Policy Sub-Committee – 23 May 2024 – Public Questions

Annexe A – Public Questions	
Name of person submitting	Question
David Redgewell	<p>Question 1a – With Department for Transport funding through the bus service improvement plan the reopening of Taunton bus and coach station as a mobility hub . When will the Somerset unity council Transport Department take back control of the bus and coach station interchange from the NHS Somerset. and a planning permission granted with Public consultation for Tower Street Bus and coach station to reopen for Departures of local bus and Regional and inter city coach services, With passengers facilities toilets including changing places facilities, waiting room, cafe and provision for cycle and E scooter hire We not the station is being reopened on the 2nd June 2024 for a special vintage bus and coach service being lease by the NHS to the Great Western and Thames Valley omnibus Trust,</p> <p>Question 1b – As part of the revised Somerset unity Council bus service improvement plan One of new instructions and guidelines is the need. to the Somerset Regional connectivity study for bus services In view of the importance of the BUS SERVICES in the North of Somerset What discussion have taken place with the west of England mayoral combined transport Authority and North Somerset council Over cross boundary bus and coach services, And with ,Dorset ,Wiltshire and Devon County Councils on the bus service improvement plan ,working in Partnership with the other local Transport Authorities and western Gateway Transport Board and Peninsula Transport Board Ie D2 Bath spa bus and coach station to Rode ,Midford, Norton St Philips, Beckington and Frome, And D2 x Bath spa bus and coach station to Frome,Services 171, 172, 173 , 174 Wells bus and coach station to Chilcompton or Shepton mallet interchange to Midsomer Norton Westfield ,Radstock Peasdown st john Bath spa bus and coach station, Service 184 Coleford to Midsomer Norton,</p>

Planning and Transport Policy Sub-Committee – 23 May 2024 – Public Questions

Service 414 , 424 Frome Cork Street coach, Town centre to Mells Radstock Westfield midsomer Norton, Service 374 Taunton Town centre soon to the Transport hub to Walton, street Glastonbury, Wells bus and coach station, Chewton Mendip, Farringdon Gurney, Clutton whitchurch Hengrove Knowle, Bristol Temple meads station, Bristol bus and coach station, Service 375 Bridgwater bus and coach station Bridgwater railway station, Walton , street Glastonbury ,Wells bus and coach station, Chewton Mendip Farringdon Gurney, Clutton Pensford whitchurch Hengrove, knowle Totterdown Bristol Temple meads station, Bristol bus and coach station, Service 21 Taunton Town centre future Transport hub, in the future, Bridgwater bus and coach station, Highbridge, Burnham on sea connecting for service 20 , Burnham on sea for Brean ,Berrow uphill hospital weston super mare railway station and weston super mare bus and coach station interchange, Service 126 weston super mare bus and coach station weston super mare railway station, to Banwell ,Winscombe Axbridge cheddar Westbury sub Mendip Draycott Easton and Wells bus and coach station, Theses routes are essential for connection to work college, schools and university health provision, Hospital in weston super mare Bristol and Bath, for residents in Mendip and sedgmoor Regions of Somerset, As are working with Dorset Council over essential bus service from Yeovil bus and coach station to Crewrence Beaminster and Bridport bus and coach CR4 , First Group plc, CR5 Yeovil bus and coach station to Yeovil pen mill station Sherborne Town, to Dorchester, South west coaches group 58 58 a Yeovil bus and coach station, Yeovil pen mill station Sherborne Town Sherborne Railway station Templecombe Wincanton bus and coach, First Group plc CR6 Yeovil bus and coach station, Yeovil Railway station, Sherborne Town Sherborne Railway station, Sturminster Newton and Blandford Forum, First Group plc In Frome service x34 Frome market place, Trowbridge station, Trowbridge Town ,Melksham, Chippenham Railway station and Bus and coach station, Favesaver Service 24 Frome market place, warminster and Salisbury, Beeline Buses South west coaches group, Service 30 Taunton, Town centre in future Transport hub, Chard interchange and Axminster station x51 x53 for Lyme Regis, Bridport, Dorchester and Weymouth , 22 x 22 Taunton Town centre future Transport hub to Wellington and Tiverton bus and coach station, Service 20 Taunton Town centre Future Transport hub to Honiton and Seaton Go ahead group South west Dartline,

Question 1c -

Planning and Transport Policy Sub-Committee – 23 May 2024 – Public Questions

With the importance in Somerset bus service improvement plan,
On the passenger environment including safety partnership with the Avon and Somerset police British Transport police and police and crime commissioner Claire Moody improvement for access for passengers travelling with reduced mobility and partly sighted, well maintained bus stops shelters and interchanges, bus coach and railway station, With progress being made on Taunton and Somerton interchange,
What action is Somerset County Council taken to improve bus and coach station at Yeovil, Wincanton, Bridgwater, Shepton Mallet interchange, Chard interchange Wellington coach station, Minehead Bank Street and Minehead Railway station,
Real time information displays
But essentially cleaning and repairing of bus shelters and essential timetable displays,
At present 4 weeks after the change over date no new timetables have been put up in Wells bus and coach station a Regional hub bus and coach interchange in South West England,
In routes 374 375 Bridgwater bus and coach station Bridgwater railway station and Bridgwater Hospital / Taunton Town centre soon to be Transport hub to Walton Street Glastonbury Wells bus and coach station, Chewton Mendip, Farrington Gurney, Clutton Whitchurch Hengrove Knowle, Totterdown, Bristol Temple Meads station, Bristol bus and coach station,
Only the West of England Mayoral Combined Transport Authority and North Somerset Council has timetables displays,
D2 D2 x Bath Spa bus and coach station to Frome Sainsburys via Midford, Rode Beckington and Frome Sainsburys,
On the Express route Frome to Bath D 2x
Wells bus and coach station to Bath Spa bus and coach station via Chilcompton and Shepton Mallet interchange,
On routes 171, 172, 173, 174,
77 Yeovil bus and coach station to Ilchester Somerton, Street Glastonbury Wells bus and coach station for Bristol bus and coach station via Bristol Temple Meads station,
A route that should become 377 Yeovil to Bristol,
There is no update passengers information or update on ward Travel posters at Taunton, Bridgwater Highbridge and Burnham on Sea, Castle Cary, Bruton, Frome Weston Super Mare Worle Parkway Templecombe, Yeovil Pen Mill, Sherborne Yeovil Junction, Crewence or Axminster railway station
What action is Somerset Council public transport unit taking to improve the passenger experience and information

Planning and Transport Policy Sub-Committee – 23 May 2024 – Public Questions

	<p>With First group plc Wales and West buses Division, First Group plc South buses Division, First Group plc Greater Western trains company limited, and First group plc MTR South Western Railway company Ltd To get passenger information urgently on bus stop / shelters, bus and coach station interchange And Railway station, Under the Transport Act 1985 and 2017 with a duty on Somerset unity council to charge operator to provide passenger information on bus stops bus and coach station and interchange,</p> <p>Response from Lead Member for Transport and Digital, Councillor Richard Wilkins</p> <p>Response from Lead Officer: Service Director for Infrastructure and Transport, Mike O’Dowd-Jones</p>
Response to be given at meeting	<p>1a - The Taunton Mobility Hub is in the development phase, so the details are still emerging as we work through the process. The work is due to be completed during 2025 and is subject to planning permission. The date for opening will be shared once it is known.</p> <p>1b - As part of the consultation process for the BSIP 2024 review, we have consulted the Bus Advisory Board which includes representatives from neighbouring Local Authorities. Officers have also attended the Enhanced Partnership Forums of these neighbouring authorities where their BSIP reviews were discussed.</p> <p>At this stage, the review contains very high-level ambition and is not a bidding document, as there is no new funding available. We anticipate a further BSIP submission next year, which may require more detailed proposals and we will ensure we discuss this with neighbouring authorities where appropriate.</p> <p>1c - Improving public transport infrastructure remains an aspiration within the BSIP subject to securing additional funding from government. At this stage there is no new BSIP funding available, but we will monitor this and should the opportunity arise to bid for additional BSIP funding, we will look to do so.</p>

Planning and Transport Policy Sub-Committee – 23 May 2024 – Public Questions

David
Stripp

KSM Parish Council

KINGSTON ST MARY NEIGHBOURHOOD PLAN

The 92% vote in favour /35% turnout didn't happen by accident.

It reflected the involvement of the community in putting the plan together over a number of years. The process began in 2016 with a household survey that formed the basis of the 2017 Community Plan. Kingston Community Partnership and the Parish Council then worked together to implement the recommendations of the CP, and this then led to the Housing Needs and Climate Change surveys in 2021.

Along with consultation meetings the resulting Neighbourhood Plan that you are being asked to make today wholly reflects feedback from KSM Parish residents.

The Steering Group (*The Dream Team*) included parish and district councillors, and members of the community with specific knowledge and skills, including a Somerset Councillor with particular knowledge and interest in climate change.

The key aspects of the plan are around recognising the issues we face:

- The imbalance in our housing stock – the lack of 2/3 bed houses
- The reducing number of young families
- And an ageing demographic

providing a framework to 'enhance the place we live, maintain a balanced, vibrant and healthy community', while protecting and retaining the character of the area.

- KSM CLT has been established to further affordable housing and we are working with Housing Enabling team. We have already seen some progress towards providing for the need for downsizing- Mill Meadow- as a result of the HNS.
- Active Travel: KAPACC – Kingston Area Pedestrian and Cycle Campaign- had been set up following the Community Plan to create a safe cycle/pedestrian route to Taunton. KAPACC worked on this aspect of the Plan. We are talking to land owners with a view to the CLT acquiring land towards securing a route. Quantock National Landscape are also planning to undertake a feasibility study to continue a route from KSM onto the Quantocks and possibly to North Petherton.

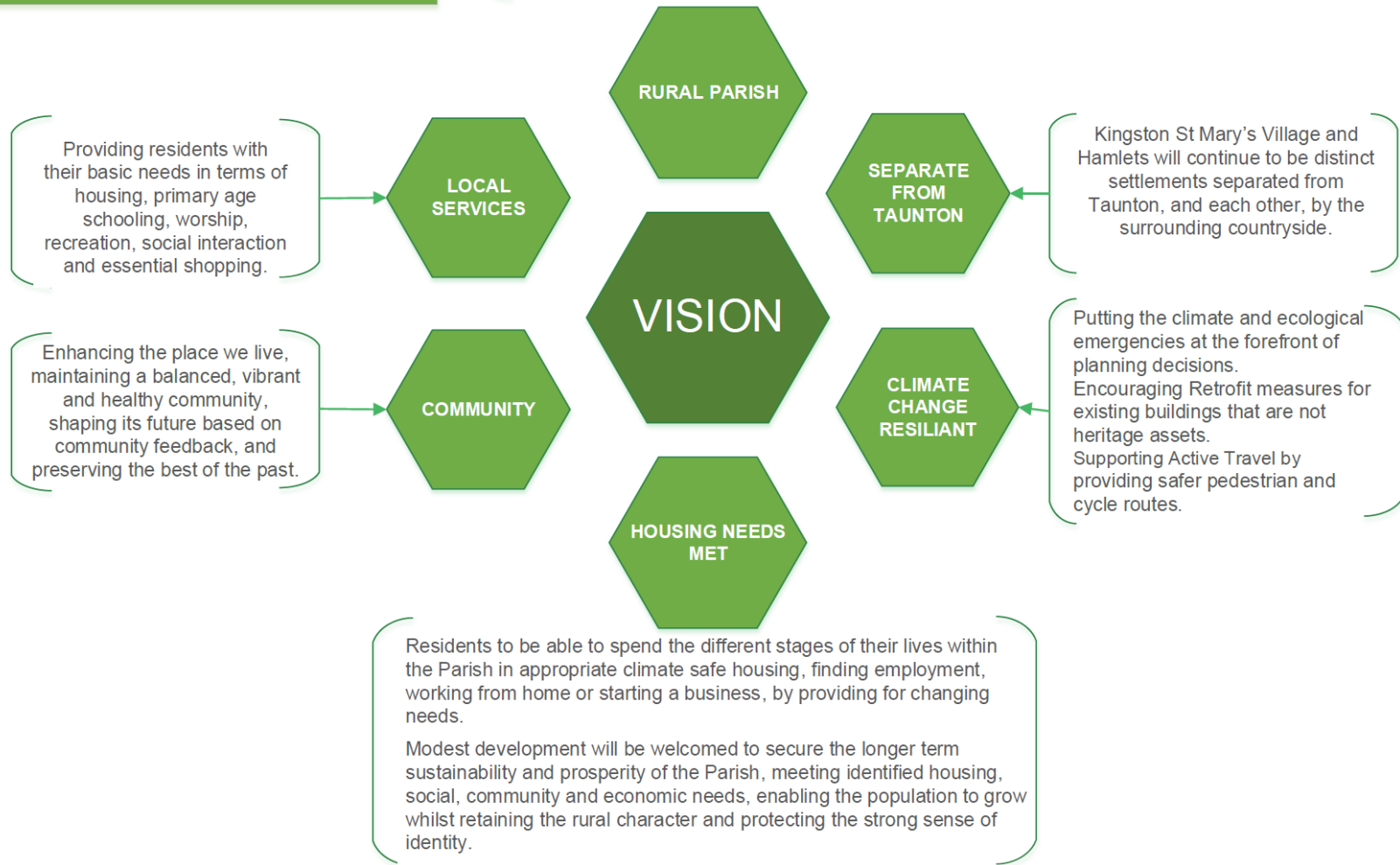
Planning and Transport Policy Sub-Committee – 23 May 2024 – Public Questions

	<p>As well as the policies which will guide planning decisions there are a number of Statements of Intent which will guide the PC in its approach over coming years, and this will be reflected in an Action Plan, similar to that which came out of the Community Plan. We'd like to thank Ann Rhodes for her light touch guidance that saw the plan as the first to come back from the Independent Examiner without any queries. A huge thanks to Ann.</p> <p>I urge you to follow the wishes of our community and vote in favour of making this plan.</p> <p>Response from Lead Member for Economic Development, Planning and Assets, Councillor Ros Wyke</p> <p>Response from Lead Officer: Principal Planning Policy Officer, Ann Rhodes</p>
Paul Townsend	KSM Parish Council

Planning and Transport Policy Sub-Committee – 23 May 2024 – Public Questions

THE VISION FOR KINGSTON ST MARY PARISH

Kingston St Mary will, by design, remain a predominately undeveloped rural Parish, with its open countryside protecting the Quantock Hills National Landscape from the urban expansion of Taunton.



Planning and Transport Policy Sub-Committee – 23 May 2024 – Public Questions

	<p>Response from Lead Member for Economic Development, Planning and Assets, Councillor Ros Wyke</p> <p>Response from Lead Officer: Principal Planning Policy Officer, Ann Rhodes</p>
<p>Joint response to be given at meeting to both David Stripp and Paul Townsend</p>	<p>Thank you to David Strip (Parish Councillor) and Paul Townsend (Chair of the Parish Council) for coming to speak about the Kingston St Mary Neighbourhood Plan and the communities vision for the parish.</p> <p>Neighbourhood Plans are a vehicle for communities to shape and influence their area. It is clear that a vast amount of work has gone into the Neighbourhood Plan and the community have been instrumental in shaping that and have given their backing to it. And the first Neighbourhood Plan in our area to go through the Independent Examination process without the need for the Examiners qualifying questions.</p> <p>It is encouraging to see that the actions of the Neighbourhood Plan are already being taken forward through the Kingston St Mary Community Land Trust and Kingston Area Pedestrian and Cycle Campaign. The Neighbourhood Plan will also feed into the evidence for the Somerset Local Plan.</p> <p>I'd like to thank David and Paul, and I wish the Parish Council and Kingston St Mary community all the best with the Action Plan from the Neighbourhood Plan.</p>