

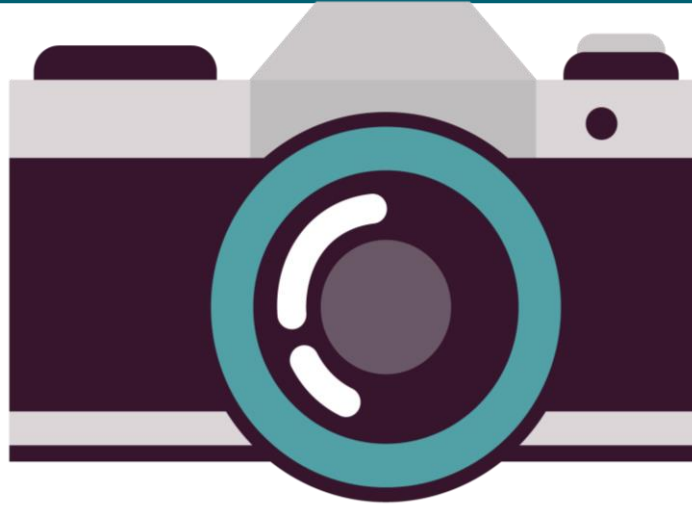


# Your Local Community Network

**Crewkerne and  
Ilminster LCN**

# Please Note

---



This event is being photographed for publicity purposes.

Images taken at this venue may be used by Somerset Council staff for promotional materials, including our website, press releases and social media posts.

If you do not want your image used, please let a member of the Local Community Network Team know. **Thank you.**

# Agenda

---

- 1. To receive any apologies for absence**
- 2. Declarations of Interest**
- 3. Approve the minutes of the last meeting.**
- 4. Update and Discussion on Local asset and Service devolution**
  - 4.1 What are the concerns of our Parishes and Communities?  
What can we do together?**
- 5. Public Questions (not covered on the agenda)**
- 6. Updates from Highways**
- 7. Active Travel Workshop**
- 8. Action and next Steps**
- 9. Dates and themes of future meetings**

# Update and Discussion on Local asset and Service devolution

---

1. What are the concerns of our Parishes and Communities?

2. What can we do together?

# Update and Discussion on Local asset and Service devolution

---

## Feedback from Groups

# Public Questions

---

Anything not on the agenda.....

# Highway Update

## Highways Steward

- A skilled highway single operative
- Drives a branded vehicle
- Visits towns/parishes to a defined works programme
- Empowered to undertake ad-hoc works, where identified
- Delivers minor works within the capability of a single operative



# Highway Steward

---

The Parish or Town Council decide on the local priorities.

The Highway Steward targets discretionary parish works. Any statutory or safety-related work (potholes, damaged regulatory signs, etc.) should be reported in the usual way for the Highway Authority to inspect and assess the appropriate response.





# Highway Steward

---

The scope of work typically includes 'low tech, high value works' such as:

- verge maintenance
- Highway surface water drainage maintenance
- weed removal
- sign cleaning
- cutting back vegetation



# Delivering Enhanced Highway Maintenance

---

Others works Parishes could undertake (but not limited to):

- Winter services (snow clearance and salting of footways/paths)
- Minor repairs to footway and off-road cycle ways
- Verge cutting and weed control
- Tree and hedge maintenance
- Rights of way maintenance
- Passenger transport infrastructure maintenance (bus stop flags and bus shelters)
- Repair and maintenance of road signs

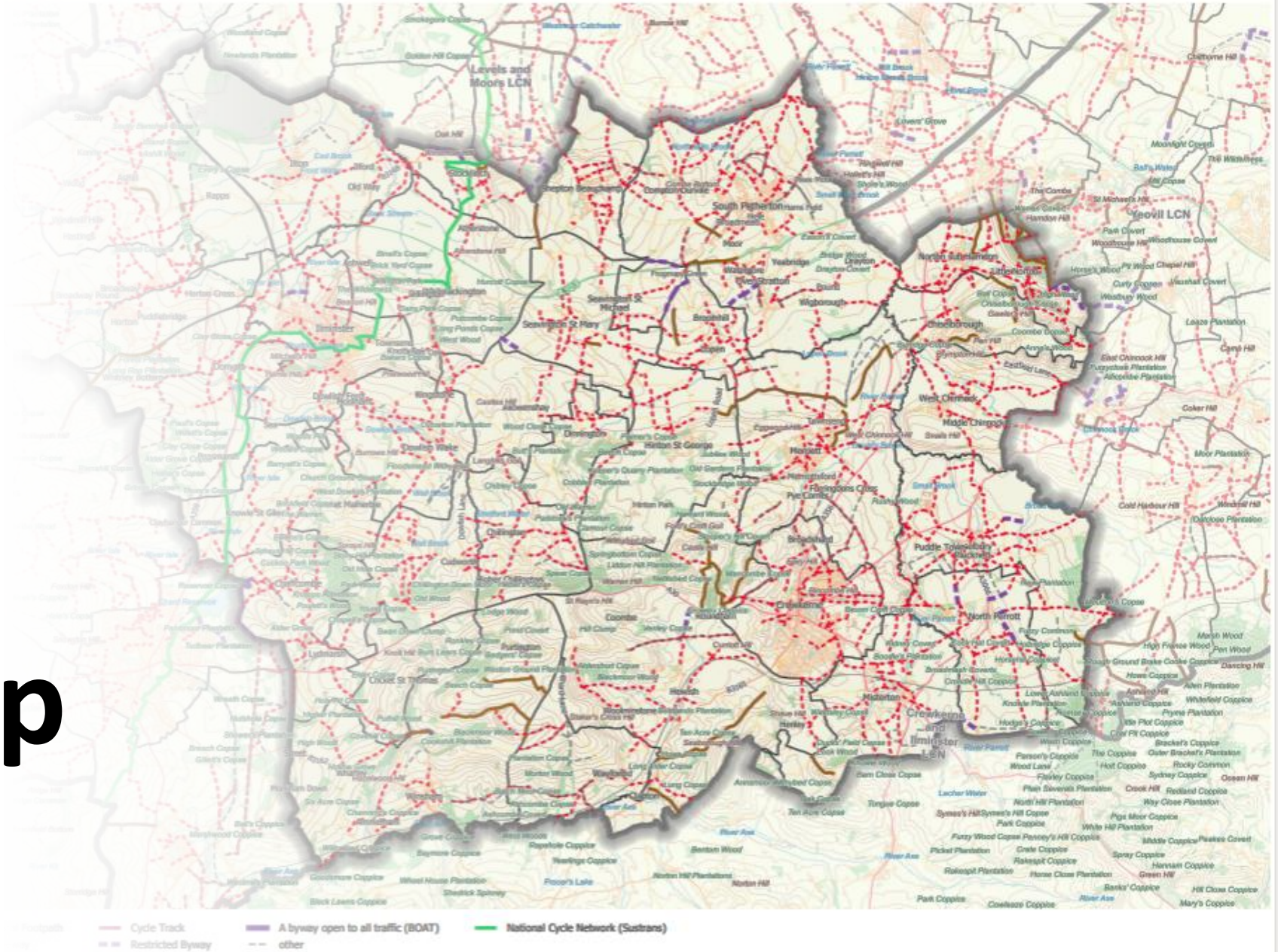
# Highways Working Group TOR

---

The key components of all LCN Highways Working groups are as follows.

- The working group will be made up of up to 6 parish representatives and Highways officers from Somerset Council.
- Parish representatives will be responsible for representing a specified geographical area within their LCN which includes but is not exclusive to their own parish.
- A balance between City and Towns and other parishes
- The group will meet, face to face, once per quarter, during office hours.
- The meeting to be no longer than 3 Hours and will ideally take place in the morning.
- Each meeting to be hosted by a Parish/Town Council, who will provide appropriate meeting space.
- The meeting venue must have good Wi-Fi and accessible access and parking.
- The parishes will identify a designated person to take notes per meeting.

# Crewkerne and Ilminster LCN



# Active Travel Workshop

- Active travel is all about getting you moving from A to B in ways that don't use fossil fuels. Active travel improves your health and wellbeing, as well as reducing your carbon footprint and saving you money.
- The sustainable travel hierarchy is a useful way to think about improving the impact of your journeys. The higher up the hierarchy, the more sustainable and greener the travel option. The most sustainable option is walking where the only resource required is you, followed by cycling which requires some equipment. Along with wheeling (the term used for wheelchair users), these methods of travel are classed as active travel.

## Why travel actively?

- Save money – cars can be expensive; not just to purchase or lease. On average, vehicle tax, maintenance and insurance alone costs £969 per year – grab yourself some trainers or a bike and save money!
- Improve your health and happiness – walking regularly can reduce the risk of cardiovascular disease by 35%, while active travel helps manage stress and weight.
- Help the planet and your community – switching from fossil fuelled vehicles to active travel will cut congestion, carbon dioxide (CO<sub>2</sub>) emissions and other air pollutants that endanger public health and ecosystems.
- Be social – walking is a great option for group journeys when you can walk and chat, while cyclists can find a great sense of community.
- It's quicker than you think – on average, you can walk a mile in around 15 – 20 minutes or cycle this in five. It could take longer to find your car keys!

# Actions and next steps

---

Summary of Highways Working Group

Summary of Active Travel Working Group

Theme for Next meeting ?

Venue for Next meeting on Thursday 21<sup>st</sup> March

## Dates for future Meetings

---

Thursday 21<sup>st</sup> March

Thursday 13<sup>th</sup> June (AGM)