

# Elective Home Education

Children and Families Scrutiny Committee

13 March 2024

- Rob Hart (Service Director, Inclusion)
- Julia Rudge (Head of Service – Vulnerable Learners)



# What is elective home education (EHE)?

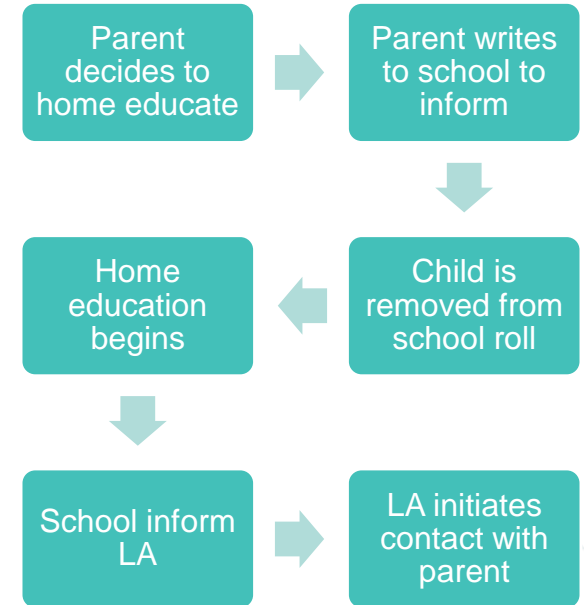
## Legal basis

- Parents are responsible for ensuring that their children receive an education. They can decide to provide an education “otherwise than at school”. All parents have the legal right to home educate and the council cannot refuse:
  - *Should parents not wish to send their child to a school, post-16 institution or alternative provision, they can make other suitable arrangements in the form of EHE. The EHE must be **efficient, full-time, and suitable**, according to the age, ability and aptitude of the child, and to any special educational needs (SEN) they may have.*
- Local Authorities have no statutory duties in relation to monitoring the quality of home education on a routine basis. However, under section 437(1) of the Education Act 1996, local authorities shall intervene if it appears that parents are not providing a suitable education. There is no definition of what is deemed ‘suitable education’.
  - *“If it appears to a local authority that a child of compulsory school age in their area is not receiving suitable education, either by regular attendance at school or otherwise, they shall serve a notice in writing on the parent requiring him to satisfy them, within the period specified in the notice, that the child is receiving such education.”*

# About EHE

## Council approach & responsibilities

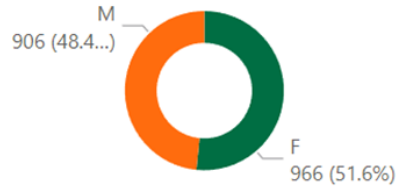
- LA has a named senior officer responsible for EHE policy and procedures.
- Maintain a voluntary register – record all cases where a child is removed from a school role to EHE, or LA is otherwise notified.
- Undertake enquiries where there are concerns about suitability of EHE.
- Intervene if enquiries suggest EHE may not be suitable for a child.
- SEND team support the annual review of child with EHC plan who receives EHE.
- A child who is on roll at a special school cannot be removed to EHE without the consent of the LA (the only scenario where the LA must agree).
- Social care investigate concerns about a child's welfare or safety (as for any child).
- If the LA identifies that a child is not receiving a suitable education, it can issue a School Attendance Order.
- Parents take on full responsibility for provision of education when they choose to home educate, including funding the cost of provision.
- EHE children have access to school nursing support.



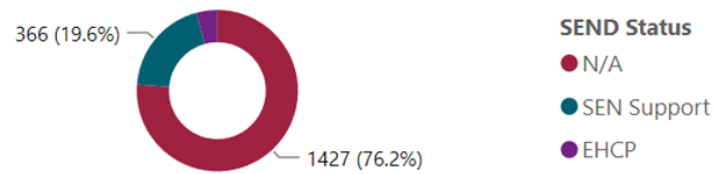
# EHE data

Students  
**1872**

Students by GENDER

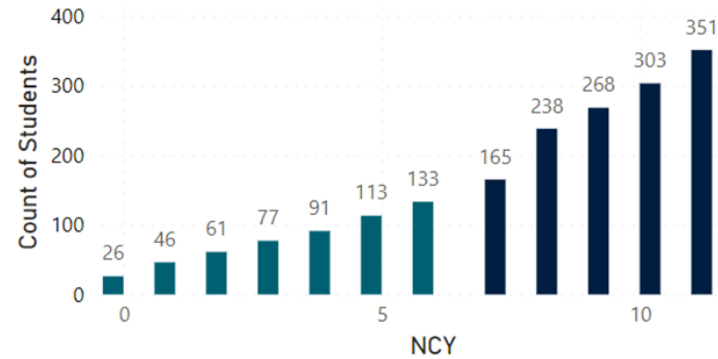


Students by SEND Status

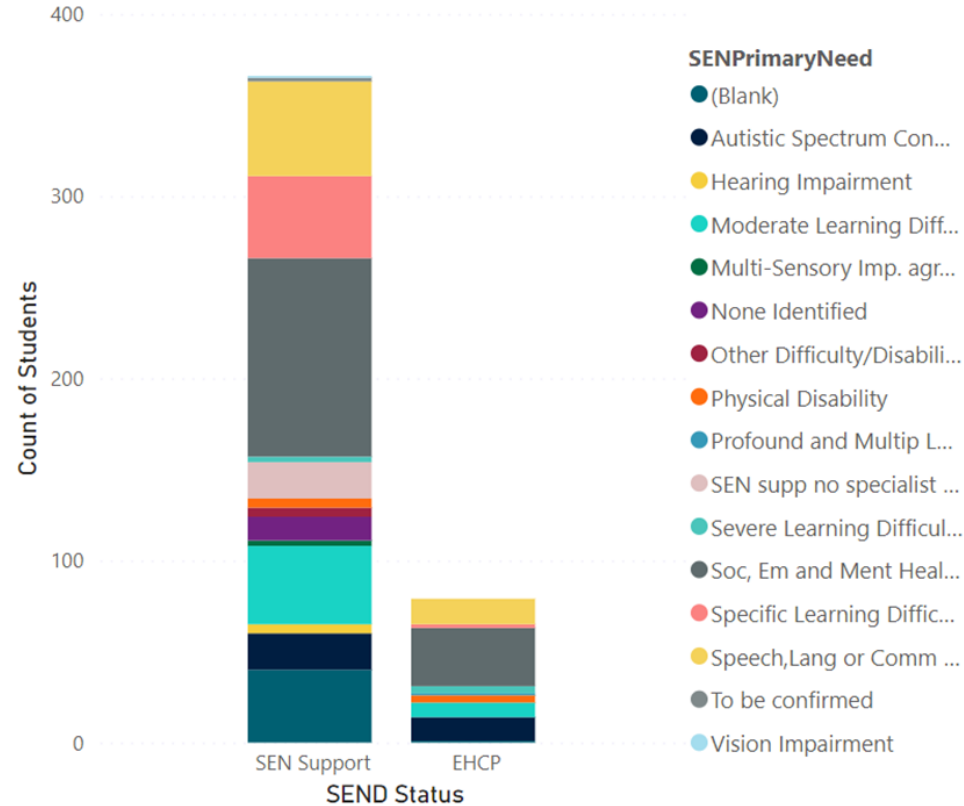


Students by NCY

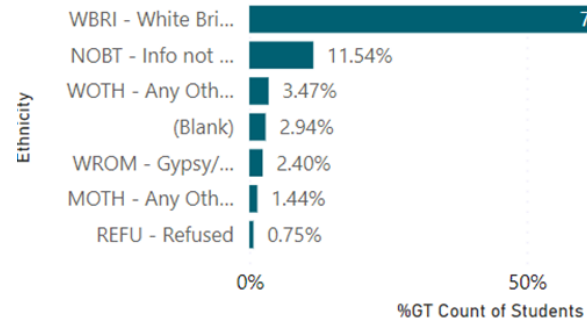
NCYPhase ● NCY 0-6 ● NCY 7-11



Count of Students by SEND Status and SENPrimaryNeed



Students by Ethnicity



**Elective Home Education**  
Reception to Year 11 that live in Somerset

**1872**

Children Looked After

**1**

Children In Need

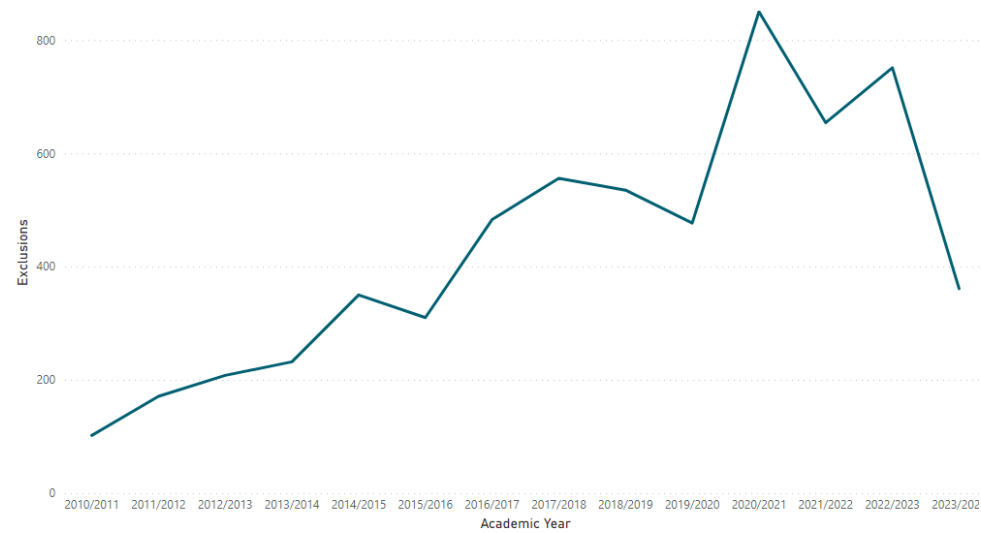
**4**

Child Protection

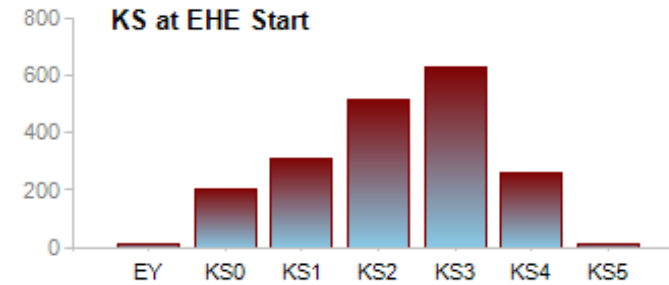
**7**

# EHE data

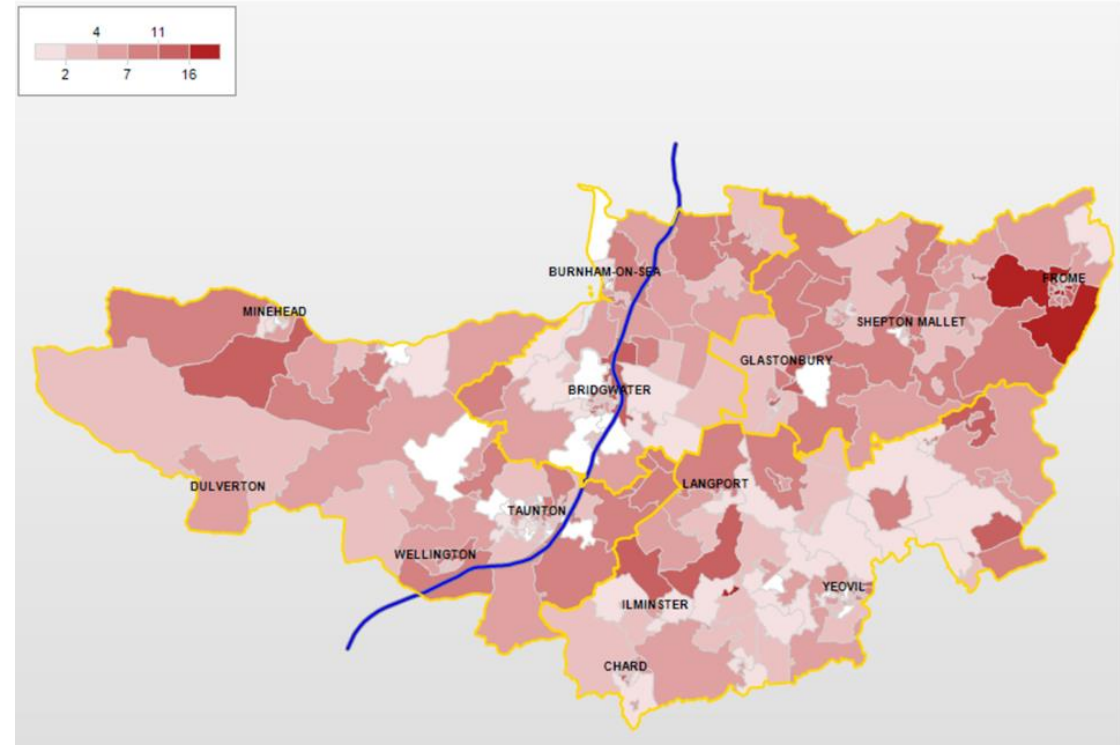
EHE numbers by Calendar Year



KS0 KS1 KS2 KS3 KS4 KS5 Post KS



Top 15 Previous Schools before becoming EHE	Total
Avanti Park School	81
The King Alfred School	45
Bridgwater College Academy	45
West Somerset College	41
Heathfield Community School (Closed)	39
Frome Community College	38
Stanchester Academy	38
No Provision (Out of School)	33
Pre-School Children with No Base	33
Robert Blake School	32
St Dunstan's School	28
Holyrood Academy	28
Pyrland School	27
The Blue School	24



# Area in focus: Frome

## Frome – Electively Home Educated - Community Connections

The Frome area has currently got around 203 children and young people registered as EHE, this has gone down slightly from 217 which was the number in June 2023. The total number across Somerset is currently around 1599.

When looking further at the data we can see that the highest year group in Frome is Year 8 with 32 young people, closely followed by Year 9 with 29 and Year 7 with 27. There are plans to look further at this data, to see if there has always been a higher number in those year groups or if it has changed over the years.

There are several factors that could account for Frome having higher than average EHE numbers. The historical Steiner School offer which closed in 2019 could account for some choosing EHE as an option, along with struggles to access suitable SEND or SEMH provision locally. Parent carers also spoke about making this choice after the lockdown lifted as they found that home schooling better suited their families.

The Community Development Team at Frome Town Council are working to develop partnerships with the EHE community particularly around the engagement around future town growth.

The Community Development Team at Frome Town Council are working to develop partnerships with the EHE community particularly around the engagement around future town growth.

Themes and ideas that have come from these early conversations are:

- Engagements and consultation events (FTC) should be designed not just to fit around school timetables.
- More information about local support and signposting is needed during the meeting with Somerset teams when they discuss EHE as an option/register as EHE.
- Frome would benefit from more playful social opportunities for EHE families particularly during the school day – further partnership work with local voluntary and community groups to develop this is needed.
- More volunteering/work experience opportunities post 16 are needed for EHE young people.
- Better timely SEND support and/or school spaces available to Frome families, lots of options are geographically very far away or not suited to specific children and young people.
- Inclusion of EHE groups in local community networks and forums.

# What's next?

## Changes in legislation and guidance in the pipeline

- Mandatory register of children not in school
- Guidance on what is a “suitable education”, including focus on literacy and maths:
  - *“a suitably educated child should be literate in English and numerate appropriate to the child’s age, ability and aptitude and any SEN they may have”;*
  - *“parents should be able to provide information to the local authority so they can establish the child’s levels of literacy and numeracy and whether they are appropriate to the child’s age, ability, aptitude and SEN”.*
- Guidance about support available to EHE families
- Guidance to support more consistent approach across LAs to school attendance orders

# Questions & Discussion



**Somerset**  
Council