

Highway Steward

- A skilled highway single operative
- Drives a branded vehicle
- Visits towns/parishes to a defined works programme
- Empowered to undertake ad-hoc works, where identified
- Delivers minor works within the capability of a single operative



Highway Steward

The Parish or Town Council decide on the local priorities.

The Highway Steward targets discretionary parish works. Any statutory or safety-related work (potholes, damaged regulatory signs, etc.) should be reported in the usual way for the Highway Authority to inspect and assess the appropriate response.



Highway Steward

- The scope of works could include:
 - ‘Low tech, high value works’ such as:
 - verge maintenance,
 - highway surface water drainage maintenance
 - weed removal
 - sign cleaning
 - cutting back vegetation



Highway Steward

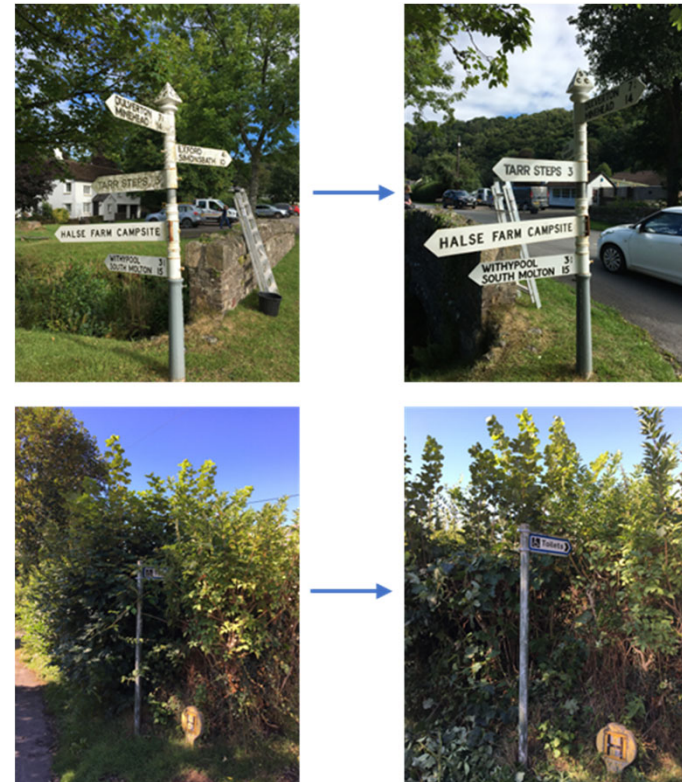


Pound Walk, Dulverton—vegetation management

Highway Steward



Recent works in Clatworthy



Signage works at Winsford

Delivering Enhanced Highway Maintenance

Options for delivery of the Highway Steward and other functions:

- Through Somerset Councils' Highway Maintenance Contract, or
- Self-delivery through suppliers commissioned by a Parish, or by Parish collaboration (note, there are examples around the county of this happening already...)

Delivering Enhanced Highway Maintenance

- Through Somerset Councils' Highway Maintenance Contract £50k for a full time Highways Steward. £25k if shared with a neighbouring cluster of parishes (LCN); or
- Self-delivery through a Parish, or by Parish collaboration
- Volunteer network at no cost
- Market rates through the local supply chain.

Delivering Enhanced Highway Maintenance

Others works Parishes could undertake (but not limited to):

- Winter services (snow clearance and salting of footways and paths)
- Minor repairs to Footway and off-road cycle ways
- Verge cutting and weed control
- Tree and hedge maintenance
- Rights of way maintenance
- Passenger transport infrastructure maintenance (bus stop flags and bus shelters)
- Repair and maintenance of road signs

Delivering Enhanced Highway Maintenance

Considerations NOT barriers:

- Permission from the Highway Authority to undertake the works, together with any necessary form of licence/ legal agreement.
- An approved Temporary Traffic Regulation Order and temporary traffic signals (if required).
- Risk assessments.
- Public liability insurance.
- Confirmation of health, safety, and welfare of operatives and those travelling through the site.

All the above is included in the package with the Highways Steward