

Connect Somerset

Connect Somerset is a partnership between Somerset Council, Somerset NHS, Voluntary, Community, Faith and Social Enterprises, and Schools, Colleges and Early Years settings

The early help system



Key messages

1

Help more residents and help them **earlier**

2

Support **schools** to be at centre of their community and draw on community resources

3

Enable residents and their families to be **resilient** and **connected** to their community

4

Integrate services and support, **closer to home**

5

Improve residents' **lives**, reduce **inequality** and reduce **demand** for expensive acute services

Get early help for pupils and families: **Use your 'Team Around the School'**

Concerned about a pupil?

Need early help for a pupil or their family?

If so, your **Connect Somerset Team Around the School** could help.

- Get help quickly – just pick up the phone
- Talk to us about early help for pupils and families
- Link to named professionals
- Access community resources to help families

Examples of things your Team Around the School can help with include:

- Attendance and risk of exclusion
- Mental health and wellbeing
- Family finances and other needs

Access Team Around the School now:

1

Identify 'named contacts' to have access to Transform Team Around the School dashboard (joined up data system) – this should include your Headteacher and Deputy, SENCO, DSL and Mental Health lead

2

Named contacts should then email Transform@Somerset.gov.uk and ask for access to the Team Around the School dashboard on Transform

3

Return email will offer a training date. Once training session is completed and following DBS number and authorisation from Manager, access link will be provided

Your Connect Somerset Champion can help you if you have any questions.

Team around the school

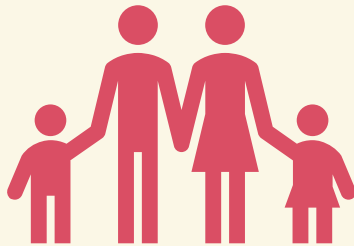
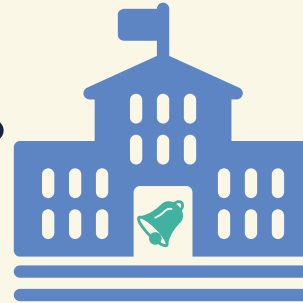
Relational practice

between professionals –
don't wait for a meeting
to call

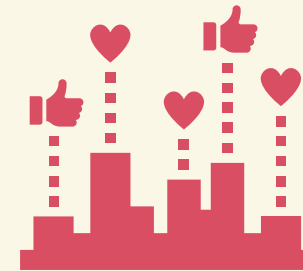


Named professionals

linked to each school



Wrap help around families
as early as possible



Connect to local community
resources and Champions



Transform data
sharing and contacts



Hi!

I have local knowledge, and we want to work together so people can get the very best out of what your local community and public services have to offer. I want to champion collaborative working with public services to be your voice, ensuring that they are designed to meet the needs of our community.

I can help you to:

- Link to public services and community resources – so there is more help to draw on for children and their families
- Support the improvement of local processes such as the Team Around the School, Data Sharing and the Transform database
- Increase the volume of early help and the speed of reacting as needs develop
- Understand everything that our local area has to offer – linking you with the people, spaces and support you need to help the people you care for

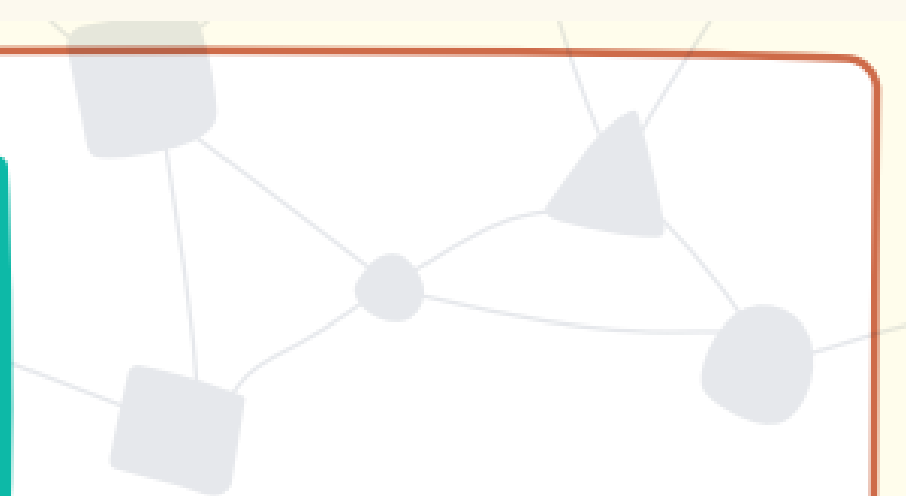
Together we can:

Share news and updates so I can ensure your work gets the recognition they deserve

Explore what's not working and the gaps in the community and how you interact with services

Involve key people who support the local community

Early Help for Families: Transform Data View



Transform Data View is a platform that is fed from the Transform database, which holds sensitive and personal information about children and families. The platform has been developed for named professionals to use in order to quickly identify safeguarding risks and provide appropriate early help to at risk families. It provides a joined up single view of a child and their family, covering their involvements and contact details of different agencies such as Children's Services, Housing, DWP and the Police.

Parent Family Support Advisors

What we know:

- PFSA service is an invaluable resource we want to protect
- Important for reducing the number of exclusions
- Want to work more closely with PFSA's as they are an integral part of the system
- Funding is coming to an end from historic contribution (Dedicated School Grant)
- Keen to sustain the service

What we currently don't know:

- How PFSA's will be funded in the future
 - Options are actively being explored. One could be top slicing DSG, other option is looking at alternative funding in the system. Although finances are super stretched.
 - Schools Forum meeting at the end of the month

Universal early help offer

- Easy to digest **offer of help** that's available to all families
- Building **resilience** for families
- Includes support with cost-of-living crisis alongside Council and partners' advice and guidance
- **All professionals have conversations with families** about what's available to help, similar to Making Every Contact Count

HELP 4 ALL

Logo(s)

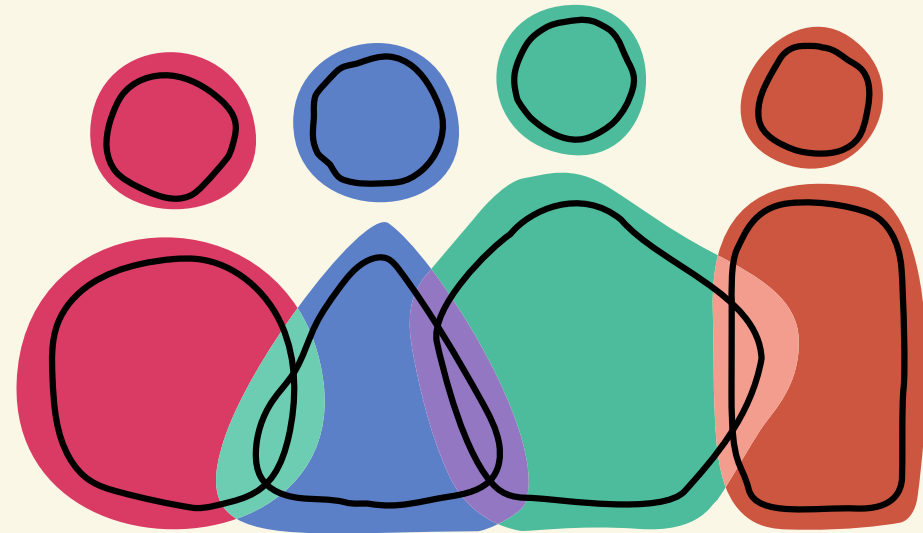
QR Code

Everyone is going through a tough time with the cost-of-living rising and putting pressure on families. Somerset Connect is here to help. Here are some of our partners' most used services and support to make family life a little easier...

Simply visit: **web address** for links...

-  **1. Money help** — if you're struggling with debt, energy costs or benefits we can help. Contact **Citizens Advice** virtual assistant for debt advice or phone **03444 88962**. If you need immediate money for food, energy or data a professional can access the **Somerset Household Support Fund** for you. You can also find a nearby **warm space** in Somerset. Also see the **Cost-of-Living** website.
-  **2. Food** — we don't want children to go hungry. Find your local **foodbank or pantry**. Children and young people may be eligible for **Holiday Activities and Food** (you will have a code from your school). And if you're pregnant or have a child under 4, you may be entitled to **healthy food and milk**.
-  **3. Home** — if you're having problems paying rent or a mortgage, please speak to your local District team in **Mendip, Sedgemoor, Somerset West and Taunton** and **South Somerset**.
-  **4. Parenting** — there are lots of Somerset **tools and guides** to help parents, carers and grandparents of children from bump to teenager.
-  **5. Mental health** — debt and the effect of covid can be difficult. Somerset **Big Tent** has a lots of local support for children and young people. There is a **health and wellbeing toolkit**. And for children and young people aged 11 to 25 there are online forums, guides and counselling available for free at **Kooth**, and for adults at **Qwell**. **CAMHS** is available for **self-referral** or call **0300 1245012**.
-  **6. Domestic abuse** — if you or your family are affected by domestic violence or abuse, you can get help from **Somerset Survivors** or call **0800 6949999**.
-  **7. Problems with drugs or alcohol** — there is advice and support if you want help with addiction. Contact **Turning Point** or phone **03003 038788**.
-  **8. Somerset Connect** — visit your local hub for community support or speak with a local **Village or Community Agent** or in Mendip a **Health Connector**.
-  **9. Safeguarding** — if you believe a child or adult is at immediate risk of harm, please call **999** for the Police. If you have concern about the safety or welfare of a child, young person or vulnerable adult, please contact Children's Social Care at **0300 1232224**.

Pin to your fridge! 



**Connect
Somerset**