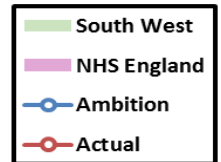




BCF Published Measures

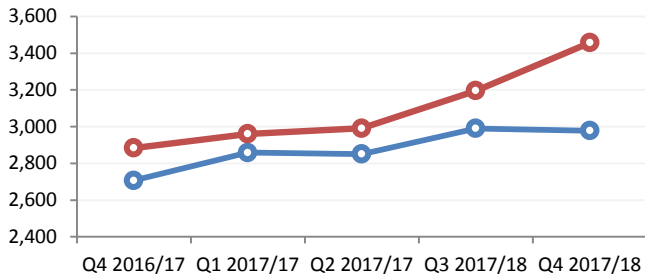
2017/18 Year End Dashboard



NHS

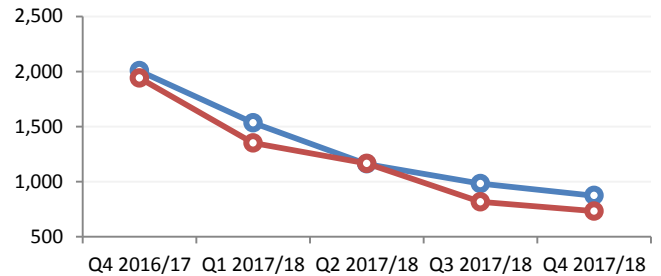
Total Non-Elective Admissions
(General and Acute, all ages, per 100,000 pop.)

	Q4 2016/17	Q1 2017/17	Q2 2017/17	Q3 2017/18	Q4 2017/18
Planned	2,707	2,859	2,850	2,990	2,978
Actual	2,884	2,960	2,991	3,196	3,457
Variance	177	102	141	206	479



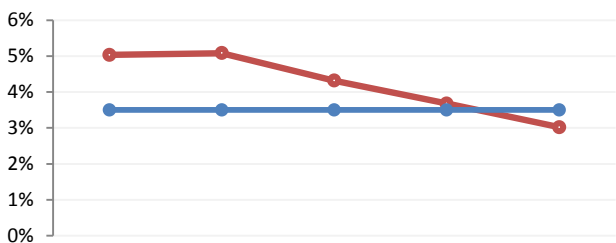
Delayed Transfers of Care (Delayed Days)
(Age 18+, per 100,000 pop.)

	Q4 2016/17	Q1 2017/18	Q2 2017/18	Q3 2017/18	Q4 2017/18
Planned	2,006	1,535	1,161	982	873
Actual	1,941	1,351	1,166	817	733
Variance	-65	-184	5	-165	-140



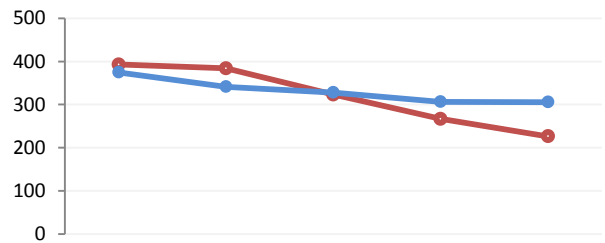
Delayed Transfers of Care (Delayed Days)
(% Bed Base, Monthly, Includes Mental Health)

	Nov-17	Dec-17	Jan-18	Feb-18	Mar-18
Actual	3.7%	3.0%	3.0%	4.0%	3.2%



Delayed Transfers of Care (Delayed Days)
(per 100,000 pop., Monthly)

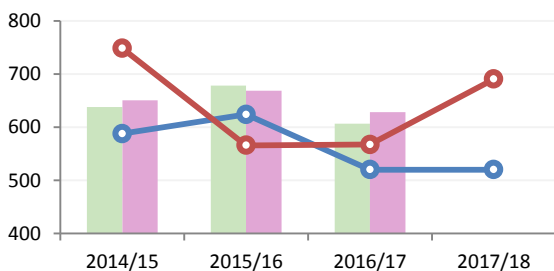
	Nov-17	Dec-17	Jan-18	Feb-18	Mar-18
Actual	266.9	226.4	225.4	268.2	239.2



COUNCIL

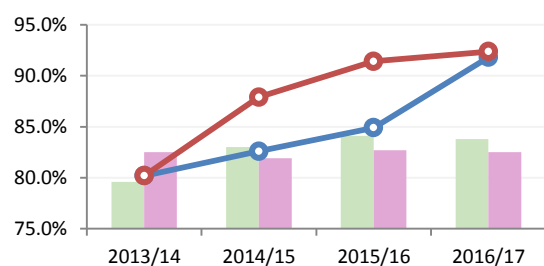
Permanent Admissions of Older People to Residential and Nursing Care Homes
(Age 65+, per 100,000 pop.) *

	2014/15	2015/16	2016/17	2017/18
Planned	587.8	624	520	520
Actual	748.3	565.9	567.3	690.3
Variance	160.5	-58.1	47.3	170.3



Proportion of Older People Still at Home 91 days After Discharge into Reablement/Rehabilitation Services
(Age 65+) **

	2013/14	2014/15	2015/16	2016/17
Planned	80.2%	82.6%	84.9%	91.8%
Actual	80.2%	87.9%	91.4%	92.4%
Variance	0.0%	5.3%	6.5%	0.6%



* Stated actual 2017/18 figure is provisional as at time of publication

** 2017/18 data unavailable until July 2018