

## Finance and Membership Statistics Update

<i>Lead Officer:</i>	Jason Vaughan: Director of Finance
<i>Author:</i>	Anton Sweet: Funds and Investments Manager
<i>Contact Details:</i>	(01823) 359584 <a href="mailto:asweet@somerset.gov.uk">asweet@somerset.gov.uk</a>
<i>Executive Portfolio Holder:</i>	Not applicable
<i>Division and Local Member:</i>	Not applicable

### 1. Summary

- 1.1 This report updates the committee on the position of the Pension Fund's provisional end of quarter 1 financial position at 30 June 2022 and related matters. This is a standard item of committee business.

### 2. Issues for consideration

- 2.1 The report is for information only unless the committee deems that action is necessary having reviewed the report.

### 3. Financial position

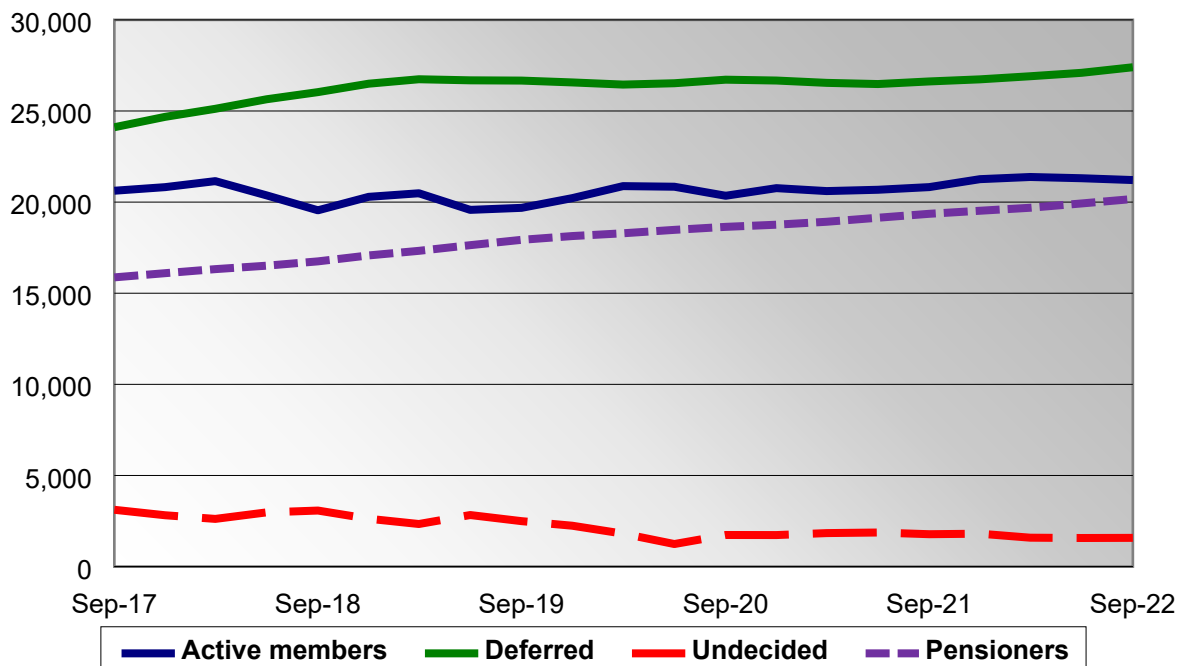
- 3.1 The outturn position for the first half of financial 2022-2023 year to 30th September 2022 against the original forecast is shown in appendix A.

#### 4. Membership Statistics

4.1 The change in membership statistics for the quarter is as follows:

	30 June	30 Sept	Change
Active members	21,310	21,210	-100
Deferred	27,094	27,400	+306
Undecided	1,569	1,577	+8
Pensioners	19,926	20,170	+244
<b>Total</b>	<b>69,899</b>	<b>70,357</b>	<b>+458</b>

4.2 The change in membership statistics for the last 5 years is shown in the graph below:



#### 5. Background Papers

None

**Note** For sight of individual background papers please contact the report author.